

**FOR SALE
AVAILABLE NOW**

**GROWMARK
TANK & TRUCK CENTER**

SM



**NEW 2015 Kenworth T370
2,700 Gallon Trans-Tech Tank**

UNIT SPECIFICATIONS

Stock Number: 467793

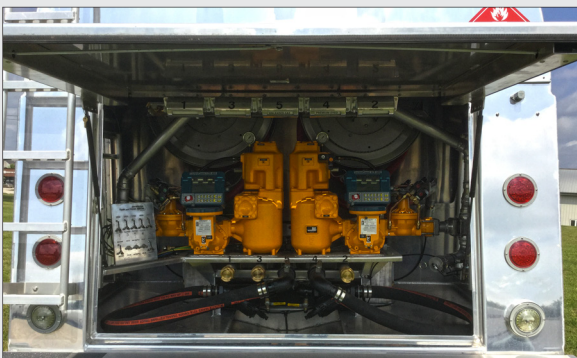
CHASSIS :

Engine – PACCAR PX-9 330
Allison 3000 RDS 6-Speed Transmission with PTO
Front Axle: Dana Spicer E-1202I 12,000#
Rear Axle: Dana Spicer S21-170 21,000#
Rear Suspension: Single Hendrickson HAS210L 21,000#
Fuel Tank: 56 Gallon Aluminum Fuel Tank
DEF Tank: 11 Gallons
Bridgestone Tires
Alcoa Wheels
Heated Mirrors
AM/FM/WB/USB Radio with Bluetooth
Rear Camera



TANK :

Tank Model: Grenada
Capacity: 2700 5-Comp, Aluminum 138" – 150" CA
Compartments: 5
Compartment Sizes: 800/500/500/500/400
Piping Rotation: 1-3-5-4-2
Tank Manufacturer: Trans Tech



PRICE: \$174,330.00

F.O.B. Yorkville, IL

***PRICE DOES NOT INCLUDE ANY
APPLICABLE LOCAL OR STATE TAXES.*
F.E.T. – Not Applicable**



**FOR ADDITIONAL INFORMATION PLEASE CONTACT SHAWNA MANGOLD
Shawna Mangold | smangold@growmark.com | (309) 830-8982**

NEW 2015 Kenworth T370 2,700 Gallon Trans-Tech Tank



ADDITIONAL SPECIFICATIONS

Bumper: Heavy duty aluminum bumper DOT 406 compliant.

Lighting: Tank is wired to meet Federal Safety Standard 108, Bett's "snap seal" LED lights with vapor proof wiring. Includes (1) LED undercarriage light in rear delivery cabinet with separate switch.

Throttle: Electronic throttle controls in rear delivery cabinet.

Miscellaneous: 10# ABC fire extinguisher mounted on chassis frame and DOT warning triangles.
Unit test pumped, calibrated and mounted on chassis.

Walkway: (1) Top Walkway, 18" installed roadside

Ladder: (1) Tank ladder installed roadside rear

Fenders: Single axle, aluminum, jeep style fenders with mud flaps

Loading: Top Loading Only

Vents: PPV vents in man-ways per DOT 406 & additional inbreathing vent

Internal Valves: 3" Air operated internal valves with operators in rear delivery cabinet.

Piping: 2" aluminum suction and 2" aluminum pump discharge lines

Dry-breaks: (5) – 2" Emco Style Adapters

Strainers: (2) – 2" Line strainers (STD with dry breaks)

PTO's: (2) Hotshift pto's with shafts and saddle, controls mounted in rear delivery cabinet.

Pumps: 2.5" Blackmer pump TXD2.5A-AVC installed curbside
2.5" Blackmer pump TXD2.5A-AVC installed roadside (Includes air operated adjustable relief valve)

Meters: Meter 2" LC M7, LCR600, in-cab printer, 2-stage preset, flow switch, hi capacity strainer & optic air eliminator installed curbside.

Meter 2" LC M7, LCR600, in-cab mux box, 2-stage preset, flow switch, hi capacity strainer & optic air eliminator installed roadside.

Hose Reels: 1-1/2" Inverted steel hose reels, electric rewind, (1) – curbside and (1) – roadside

Delivery Hoses: 1-3/8"x125' Goodyear Redwing installed curbside - 1-3/8"x100' Goodyear Redwing installed roadside

Nozzles / Holders: Nozzle manual Scully with swivel, 1.38" spout installed curbside. Nozzle automatic OPW 1290 with swivel, 1.38" spout installed roadside. (2) Nozzle holders installed inside delivery doors and drain to recessed pan area and (2) outside and below delivery doors.

Hose Flush System: Flush tank 40 gal, aluminum piped to curbside pump suction.

Cabinets: Aluminum cabinet bolt-on 32"T x 28"D x 70"L installed curbside. Optional cabinet installed on roadside

Work Light(s): (2) Adjustable LED work light installed on unit with switch in cab

Paint / Finish: N/A – Tank is fabricated with polished aluminum.

2" Drop hose X tank length with 2" couplers and plugs on each end

(1) Product indicators